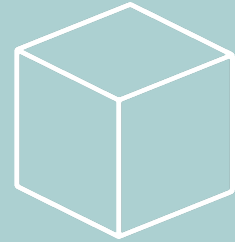


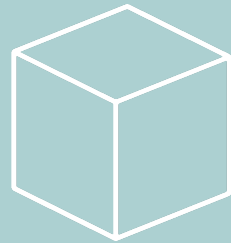
# Community Health Management



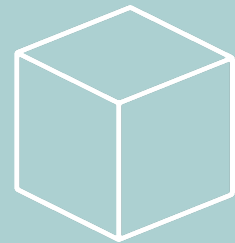
Ms. Sureewan Siladlao  
Community Public Health Program



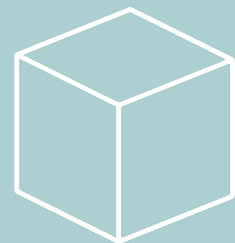
**Concept**



**Community**



**Healthy Community**



**Holistic care**



# Concept





# Community

The people living in one particular area or people who are considered as a unit because of their common interests, social group, or nationality

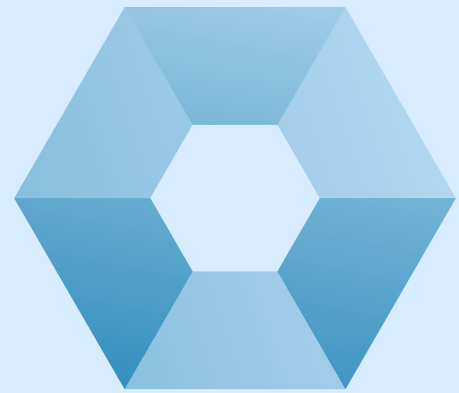


# Meaning is given in two dimensions

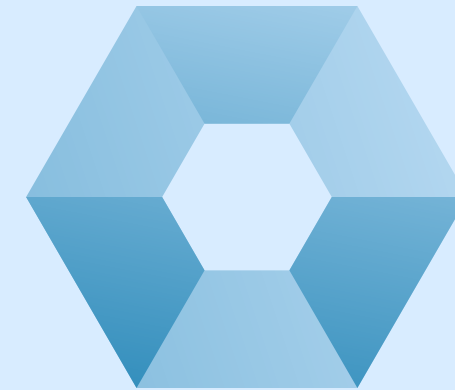
- Community spatial dimension
- Social dimension



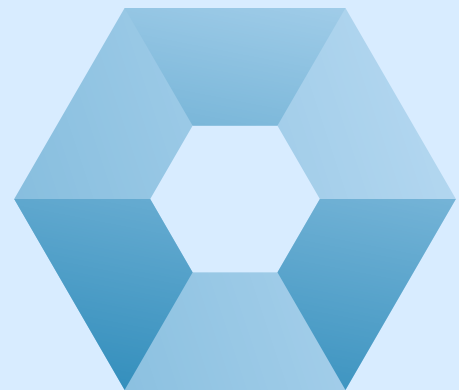
# community composition



People.



location

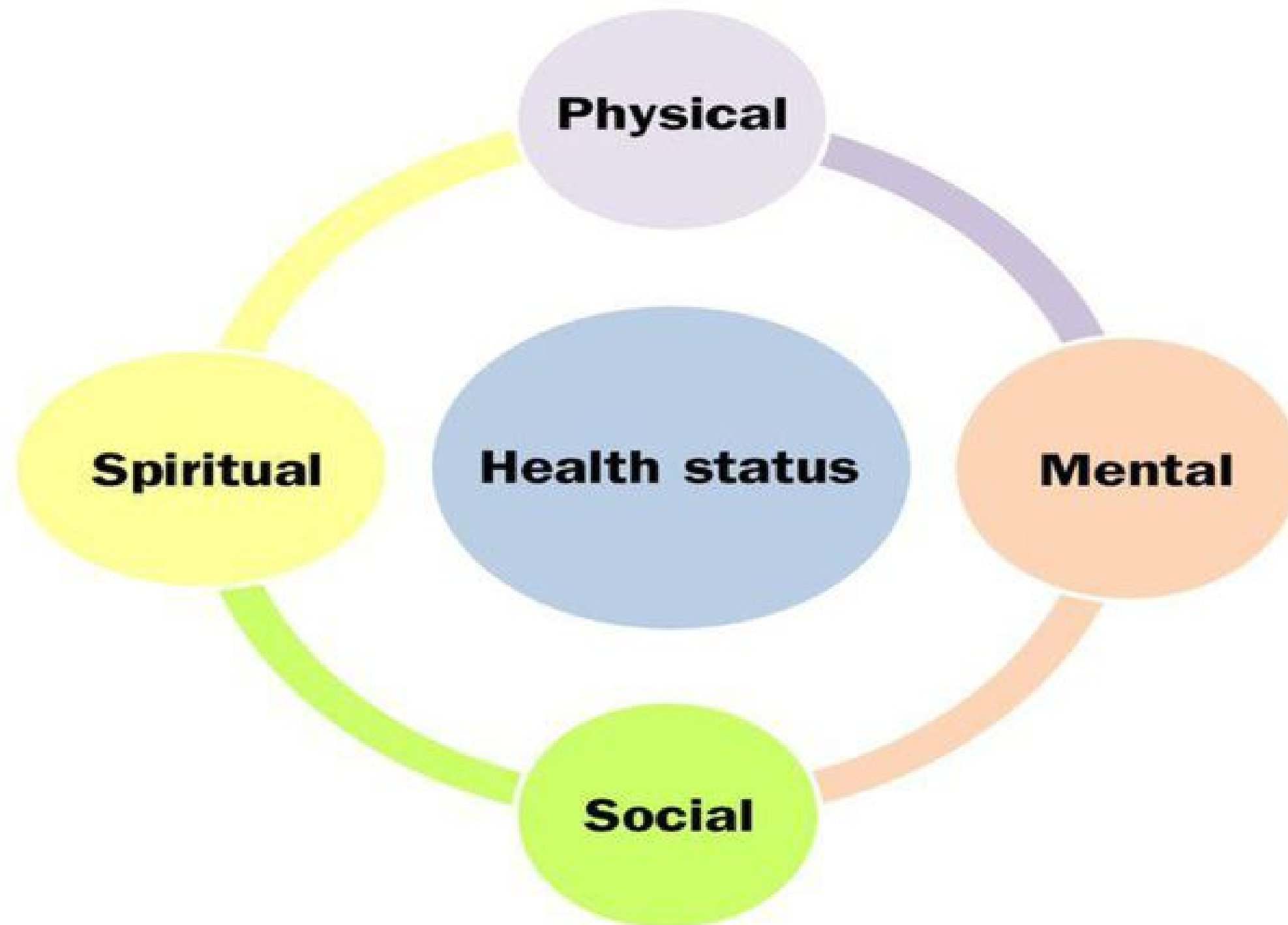


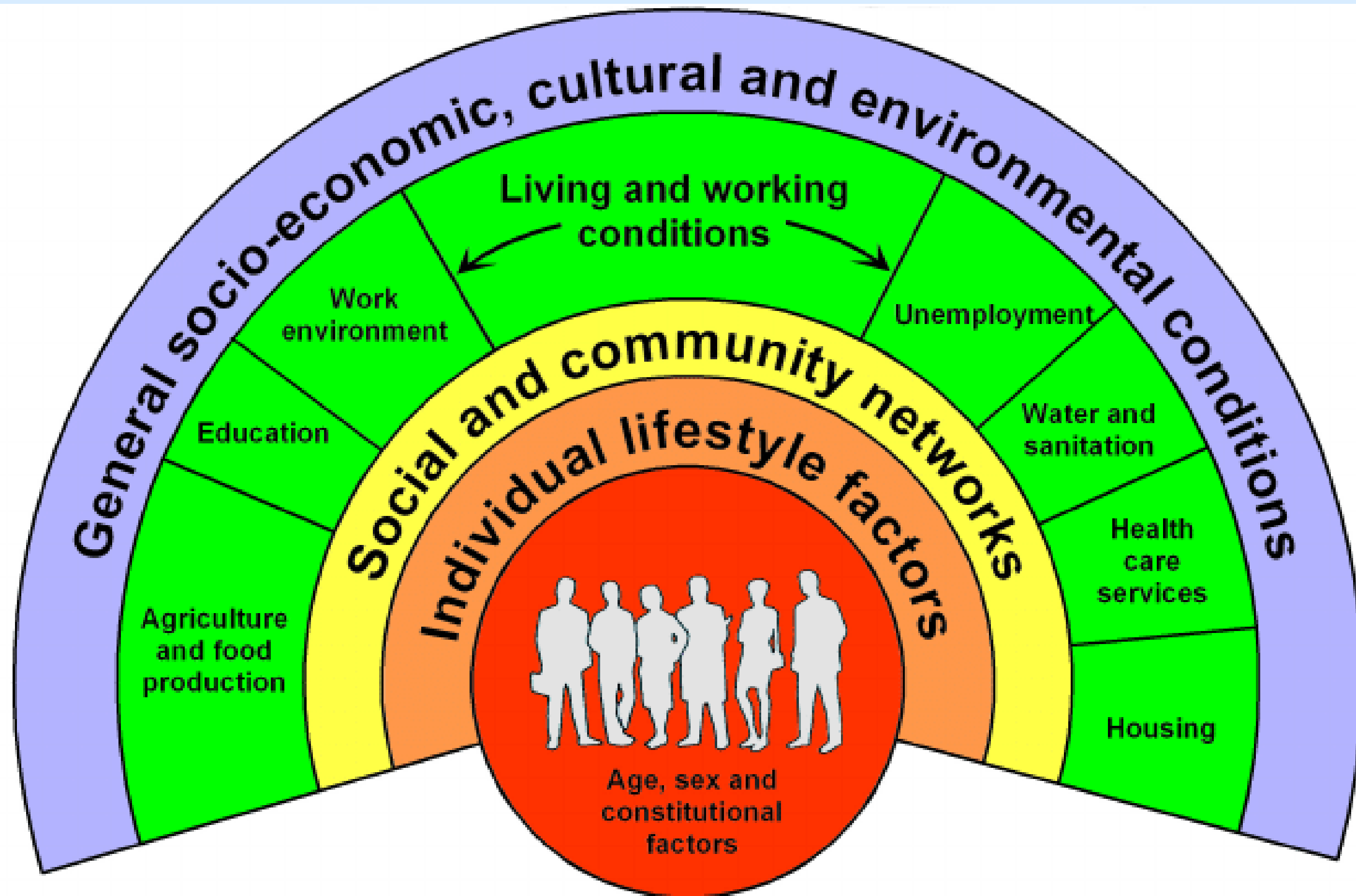
social  
interaction



Relationship &  
function

# Dimensions of health





Source: Dahlgren and Whitehead, 1991



# Healthy Community

- The community cooperates effectively in identifying community problems and needs.
- The community agrees on goals and priorities.
- The community agrees on guidelines or methods to be followed.
- Communities cooperate effectively in joint operations.

# Holistic care



END