

# Plant Pathology in Cannabis and Medicinal Plant

Introduction of Plant Pathology in Cannabis and Medicinal Plant

---

Mr.Chawalit Yongram, Ph.D.



# Topic

- 1. Meaning of Plant Pathology in Cannabis and Medicinal Plant**
- 2. Objective of Plant disease**
- 3. Causes of plant disease**
- 4. Composition of plant pathogens**
- 5. Classification of plant diseases**
- 6. Plant Disease Diagnosis**

# 1. Plant Disease

---

**Plant** : the plant has It performs its normal functions best according to the species' abilities, such as cell division, nutrient uptake photosynthesis



# 1. Plant Disease



## Plant Disease

Symptomatic plants or abnormal growth Due to the plant's system, such as the growth of cells. absorption of food and water transporting water photosynthesis, etc. abnormally due to pathogens or improper environment

# 1. Plant Disease

Plant disease, according to the definition in the dictionary, is explained in 2 meanings, namely

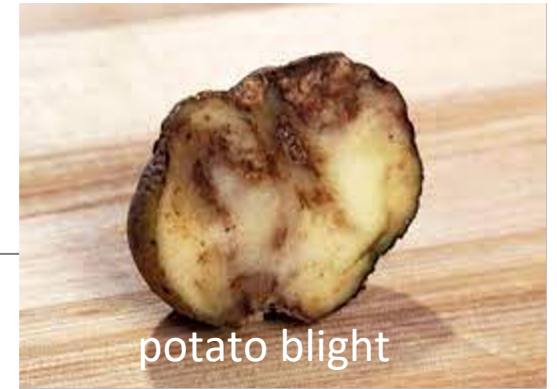
1. Plant diseases show symptoms (symptoms) manifested in symptoms of plant damage (malady) and plant abnormality (disorder).

2. Any changes that are different from normal plants, such as changes in plant structure by showing signs of lower quality and economic value

## 2. Objective of Plant disease

---

Plant diseases that cause human starvation and migration in 1845-1850 spread out potato blight or *Phytophthora infestans* have an crisis to they can cure Euro huger. the people have 20-25%. Irish die around million peeps and emigrate to any country



## 2. Objective of Plant disease

**2.2** Plant diseases affect jobs and economy

**2.3** plant diseases low quality and low price

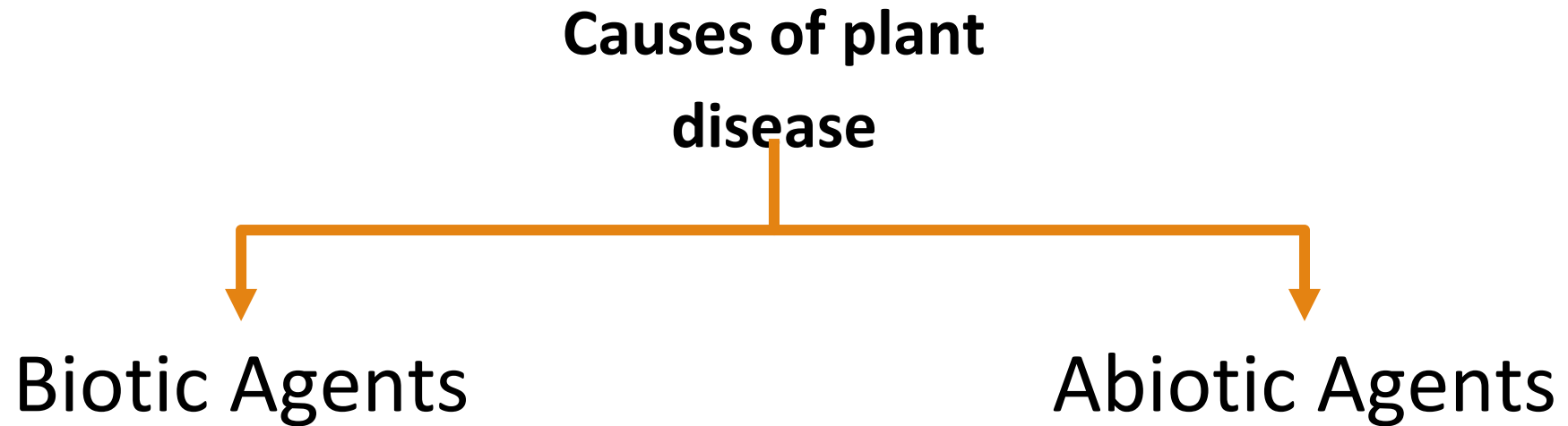
**2.4** post-harvest disease

**2.5** Plant diseases cause crops to be directly toxic to living organisms.



# 3. Causes of plant disease

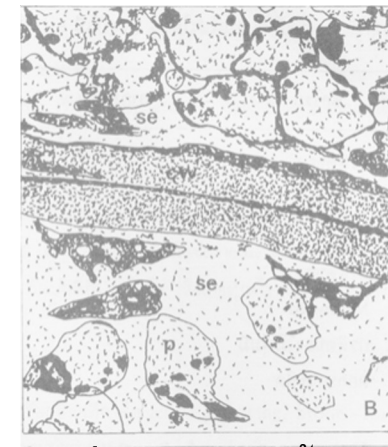
---





# Biotic Agents

1. Fungi
2. Bacteria
3. Virus
4. Nematodes
5. Phytoplasma
6. Protozoan



โรคเหี่ยวของปาล์มหัวมัน

# Abiotic Agents

1. Lack of nutrition
2. Food poisoning
3. Soil Moisture regime
4. Extreme temperature
5. Overexposure or Underexposure
6. PH Acidity or Alkaline
7. Anoxic
8. Pesticide Residue
9. Poor Agricultural Practices



# 4. Composition of plant pathogens

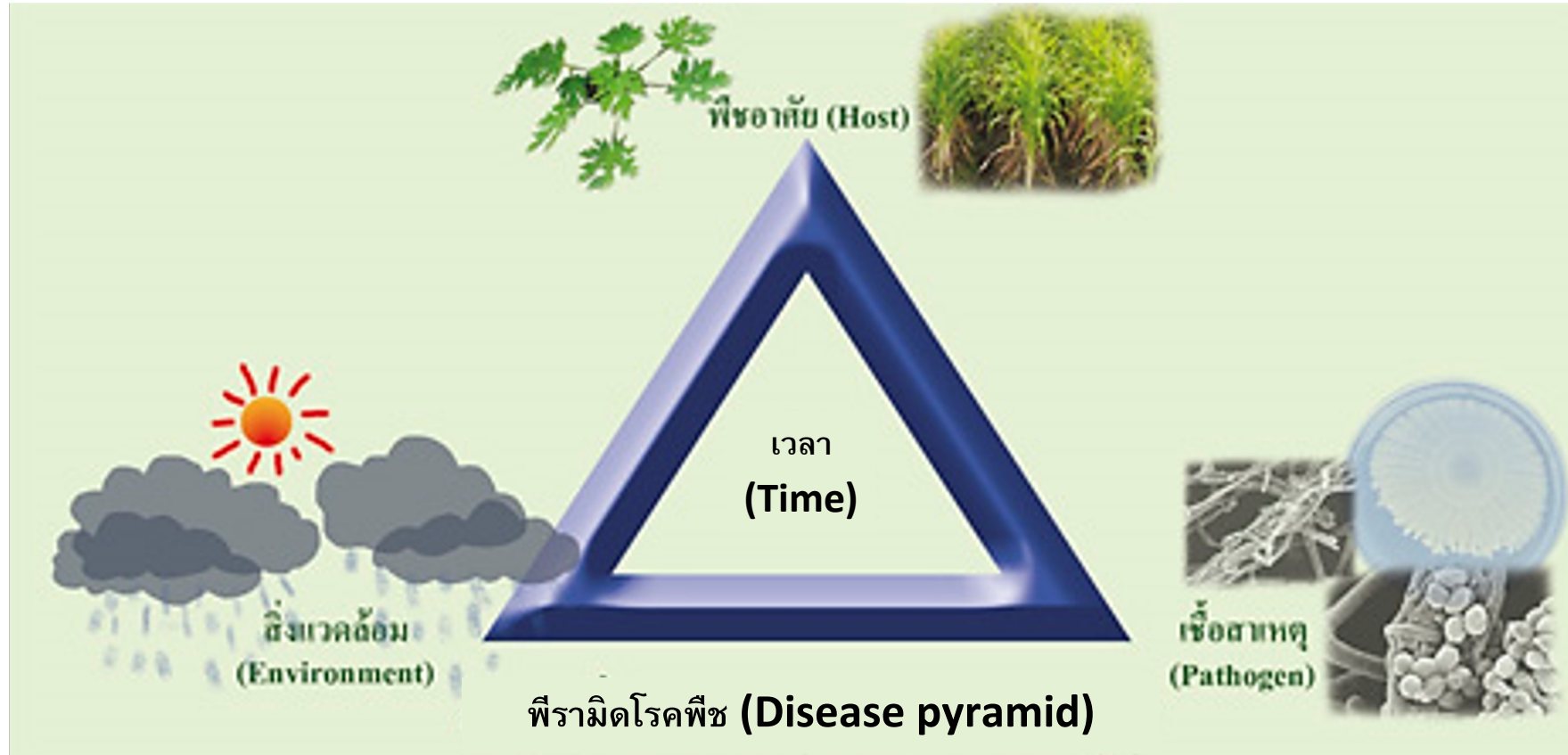
---

**Composition of plant pathogens is the important facts incidence of disease  
However, the disease imperfect**

**Disease pyramid**

- 1. Host**
- 2. Pathogen**
- 3. Environment**
- 4. Time**

# 4. Composition of plant pathogens



# Damage caused by plant diseases

1. Reduce production

2. Reduce output quality



# Damage caused by plant diseases

## 3. Free prevention of plant diseases.



## 4. Damage to the environment and organisms.



Thank You

The text "Thank You" is rendered in a highly stylized, cursive script. The letters are a deep navy blue with a subtle 3D effect, highlighted by a thin gold outline and a soft black shadow. The 'T' is particularly large and features a long, sweeping horizontal stroke that extends to the right. The 'Y' and 'o' also have long, elegant descenders. The word "You" is written in a similar style but with a more compact, rounded form. The text is embellished with clusters of decorative elements: gold and black stars and dots are scattered around the top and bottom of the letters, adding a celebratory and elegant touch.